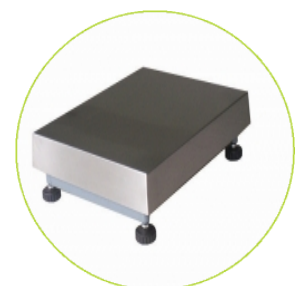
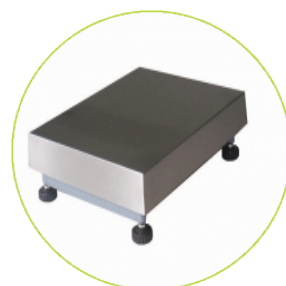
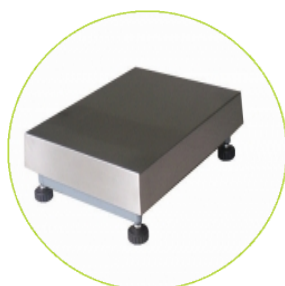
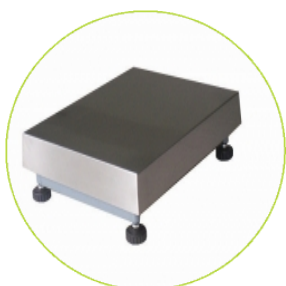


## Speed, Performance, Value - The Right Balance

- Non-slip adjustable levelling feet
- Approximately 3 meter long shielded cable
- Available in a range of capacities and platform sizes
- Can be supplied complete with indicator
- Overload protection
- Precision load cell technology
- Rugged mild steel construction
- Stainless steel weighing pan
- Weighing
- Parts counting
- Percentage weighing
- Comparative Weighing
- Shipping and Receiving
- Batching Items for Processing
- Stock and Warehouse Auditing

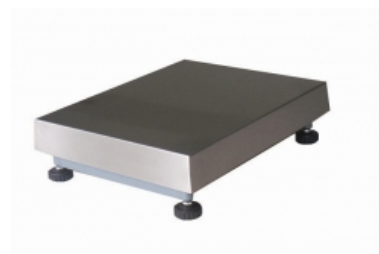


## Technical Specifications

| Model            | GF 30     | GF 60     | GF 300    |
|------------------|-----------|-----------|-----------|
| Maximum capacity | 30kg      | 60kg      | 300kg     |
| Platform size    | 350x350mm | 350x450mm | 600x800mm |
| Net weight       | 15kg      |           | 45kg      |

## General Specifications

|                    |                                |
|--------------------|--------------------------------|
| OIML Class         | III                            |
| Display            | Not applicable                 |
| Excitation voltage | 5 - 10 V AC or DC              |
| Housing            | Mild Steel/Stainless Steel Pan |



Adam Equipment - offices worldwide

[www.adamequipment.com](http://www.adamequipment.com)